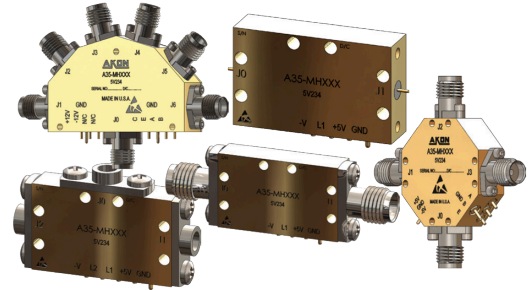


### KEY PERFORMANCE FEATURES:

- Low Insertion Loss
- High Isolation
- Wide Band Frequency Coverage
- Compact and Ruggedized Packaging
- Package Options: Drop-In, SMA/2.9mm & SMP



### PRODUCT DESCRIPTION:

AKON's product line of RF & Microwave Switches that operates over a frequency range of 0.5 - 40 GHz. These switches are available in standard configurations such as SPST through SP6T with single ended TTL control. Our SP2T switches have a typical Insertion Loss of 1.2 - 1.8 dB, Isolation of 65 dB, and switching speeds of 40 nsec. Package options include Drop-In, SMA/2.9mm & SMP, and offers reflective/absorptive configurations.

AKON products are designed to withstand harsh environments of Military, Space and Industrial applications. Our compact and ruggedized products are designed to handle harsh mechanical shock/vibrations, temperature cycling, altitude and temperature extremes.

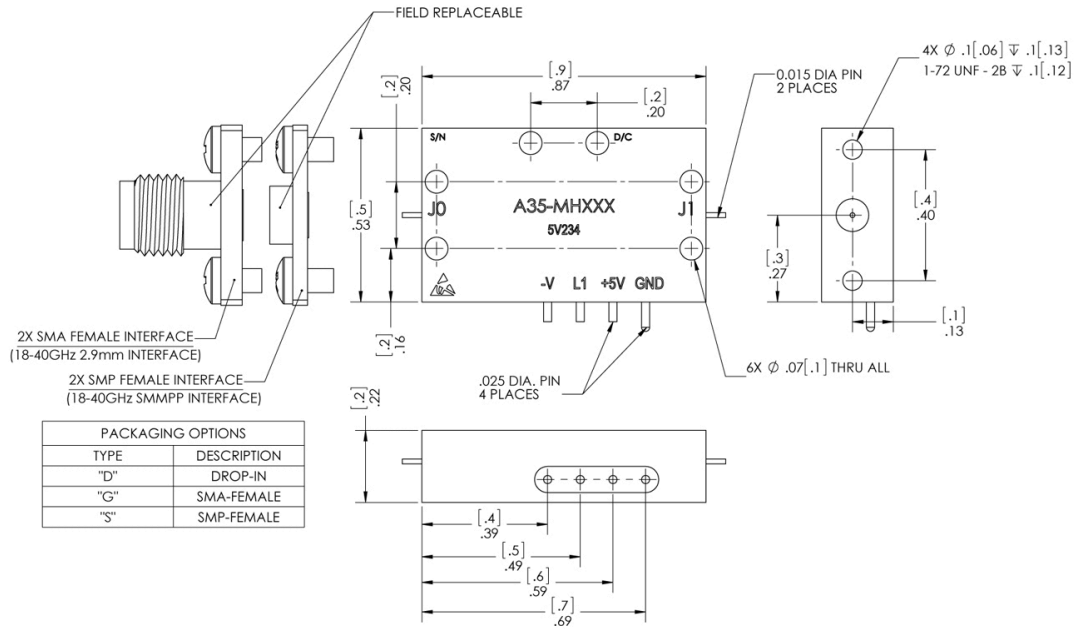
Reliability is a key feature of AKON products and to ensure this we perform ESS testing on all of our products. AKON offers an off-the-shelf screening option called its "H" series, per Mil-STD-883 level B that is available on all of its RF & Microwave Components. **For custom electrical, mechanical, and screening options, please contact AKON Sales: [sales@akoninc.com](mailto:sales@akoninc.com) (or) 408-432-8039.**

### SPECIFICATIONS:

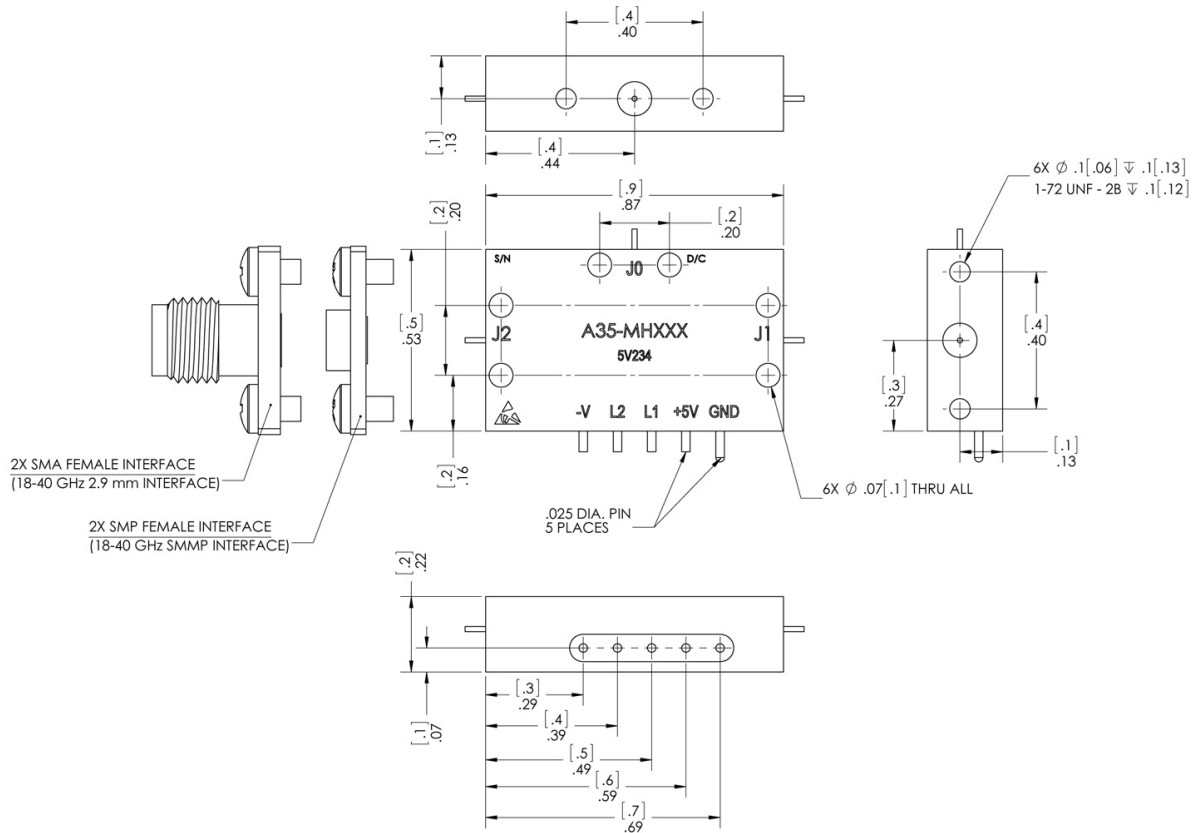
Model Number	Frequency (GHz)	Insertion Loss (dB)	Isolation (dB)	VSWR	Switching Speed (nS)	Bias (VDC)	Control Input	Power Handling (dBm)	Pkg.	EAR99/ITAR
A35-MH209	0.5-8	1.4	60	1.8:1	50	+5, -12	TTL	24	D, C, S	EAR99
A35-MH2010	0.5-12	1.4	60	1.8:1	50	+5, -12	TTL	24	D, C, S	EAR99
A35-MH2011	0.5-18	1.9	60	1.8:1	50	+5, -12	TTL	24	D, C, S	EAR99
A35-MH2012	0.5-20	2.4	60	1.8:1	50	+5, -12	TTL	24	D, C, S	EAR99
A35-MH2013	0.5-4	1.3	60	1.8:1	50	+5, -12	TTL	24	D, C, S	EAR99
A35-MH2014	0.5-8	1.8	60	1.8:1	50	+5, -12	TTL	24	D, C, S	EAR99
A35-MH215	0.5-12	1.8	60	1.8:1	50	+5, -12	TTL	24	D, C, S	EAR99
A35-MH216	0.5-18	2.3	60	1.8:1	50	+5, -12	TTL	24	D, C, S	EAR99

Model Number	Frequency (GHz)	Insertion Loss (dB)	Isolation (dB)	VSWR	Switching Speed (nS)	Bias (VDC)	Control Input	Power Handling (dBm)	Pkg.	EAR99/ITAR
A35-MH217	0.5-20	2.8	60	1.8:1	50	+5, -12	TTL	24	D, C, S	EAR99
A35-MH206*	1-18	4.3	65	2.0:1	50	+5, -12	TTL	20	D, C, S	EAR99
<b>SP2T</b>										
A35-MH139	2-18	3	60	2.0:1	50	+/- 5	TTL	24	D, C, S	EAR99
A35-MH207*	6-20	4.3	65	2.0:1	50	+5, -12	TTL	20	D, C, S	EAR99
A35-MH205**	18-40	4.5	65	2.0:1	75	+5, -12	TTL	20	D, C, S	EAR99
<b>SP3T</b>										
A35-MH132	2-18	2.5	60	2.0:1	50	+/- 5	TTL	24	C, S	EAR99
<b>SP3T - SP2T</b>										
A35-MH138	2-18	3	60	2.0:1	50	+/- 5	TTL	30	C, S	EAR99
<b>SP4T</b>										
A35-MH202*	1-18	4.3	65	2.0:1	50	+/- 5	TTL	20	C	EAR99
A35-MH133	2-18	4.4	60	2.0:1	50	+/- 5	TTL	24	c	EAR99
A35-MH203*	1-18	4.3	65	2.0:1	50	+/- 5	TTL	20	C	EAR99
<b>SP5T</b>										
A35-MX195	2-18	3	70	2.0:1	50	+/- 5	TTL	24	C	EAR99
A35-MH137	2-18	4	60	2.0:1	50	+/- 5	TTL	24	S	EAR99
<b>SP6T</b>										
A35-MH204*	1-18	6	65	2.0:1	75	+5, -12	TTL	20	C	EAR99
A35-MH134	2-18	6	55	2.0:1	50	+5, -12	TTL	24	C	EAR99

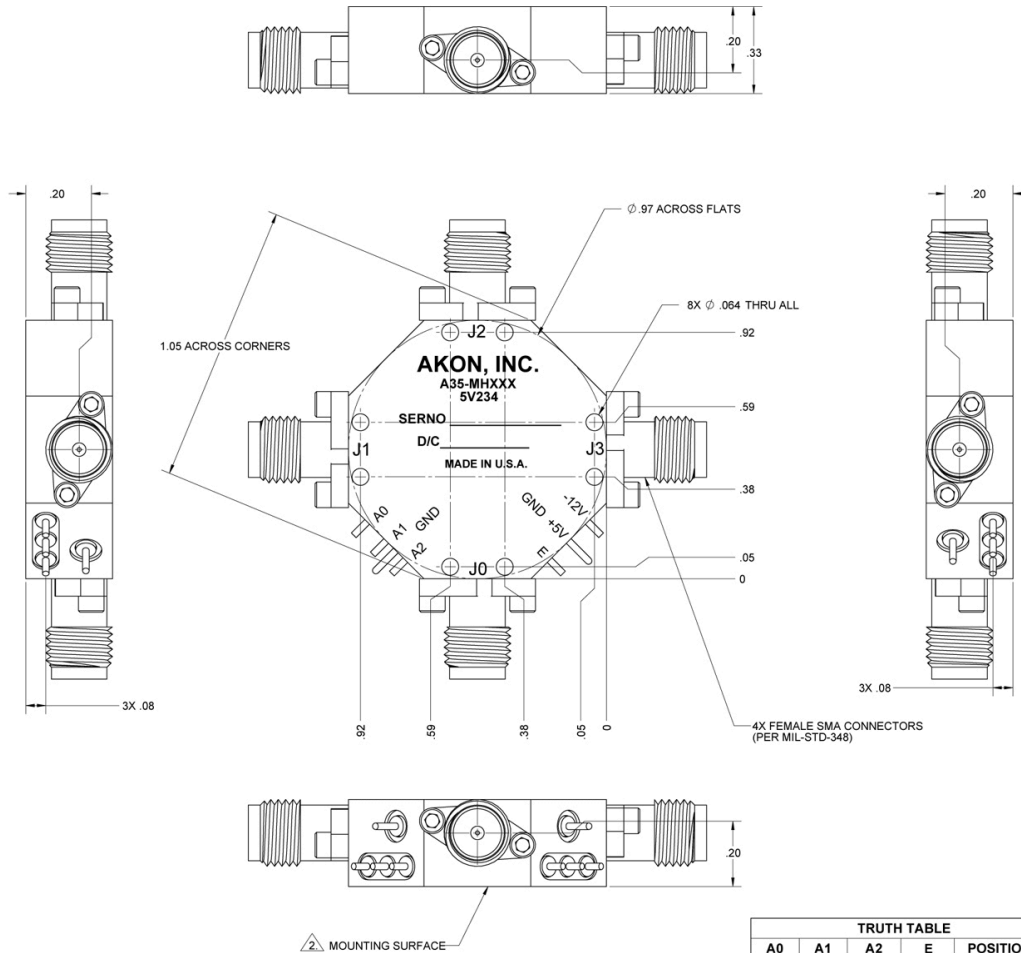
### SPST OUTLINE DRAWING:



### SP2T OUTLINE DRAWING:

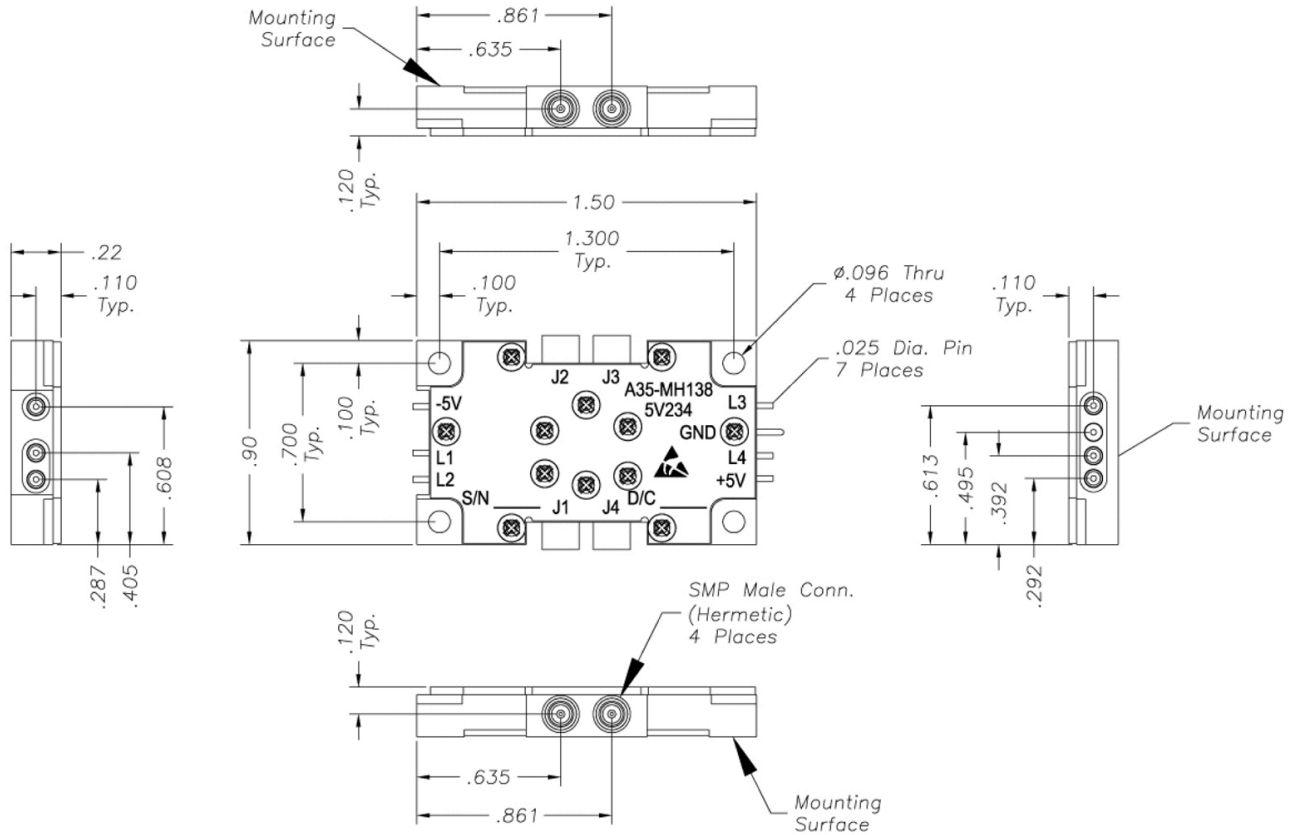


## SP3T OUTLINE DRAWING:

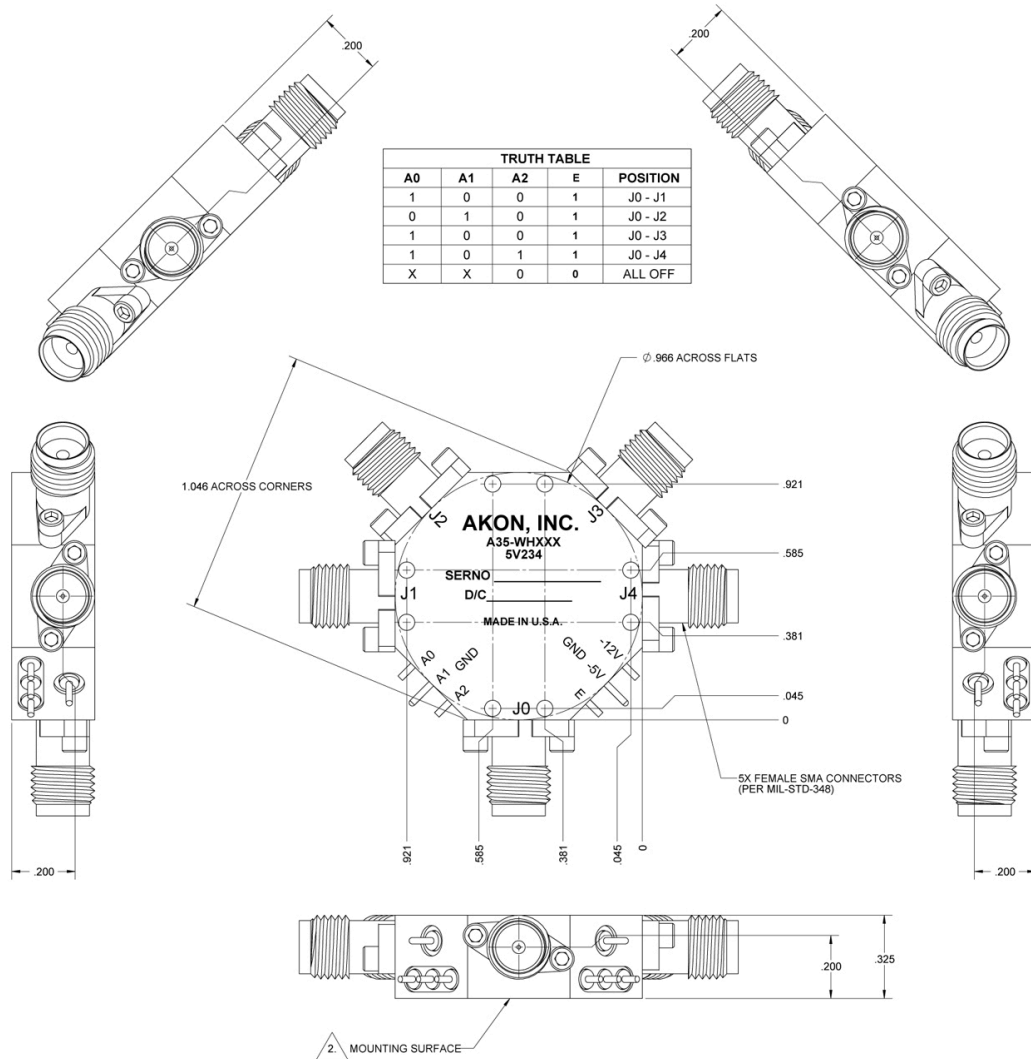


TRUTH TABLE				
A0	A1	A2	E	POSITION
1	0	0	1	J0 - J1
1	1	0	1	J0 - J2
1	0	1	1	J0 - J3
X	X	X	0	DISABLED

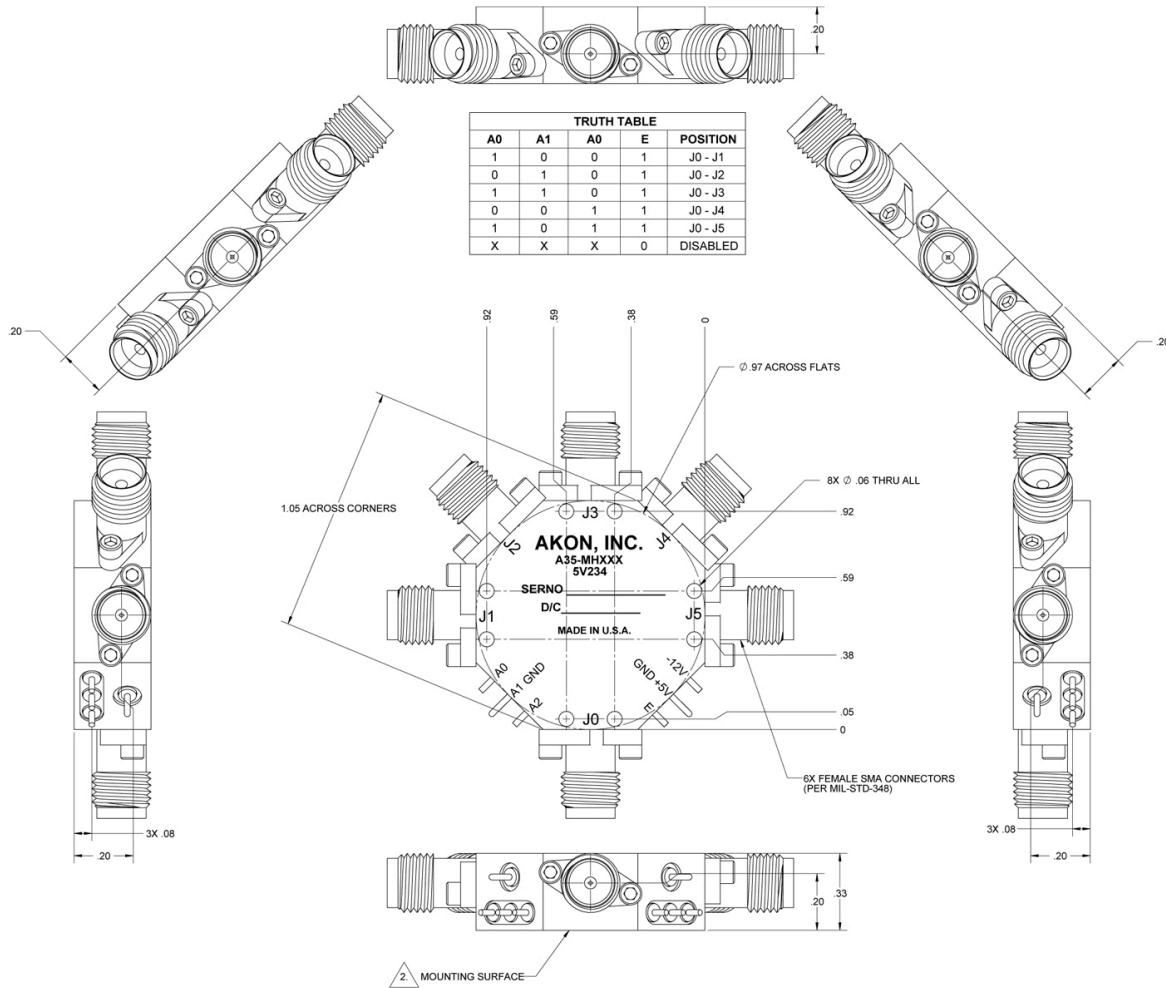
### SP3T-SP2T OUTLINE DRAWING:



### SP4T OUTLINE DRAWING:

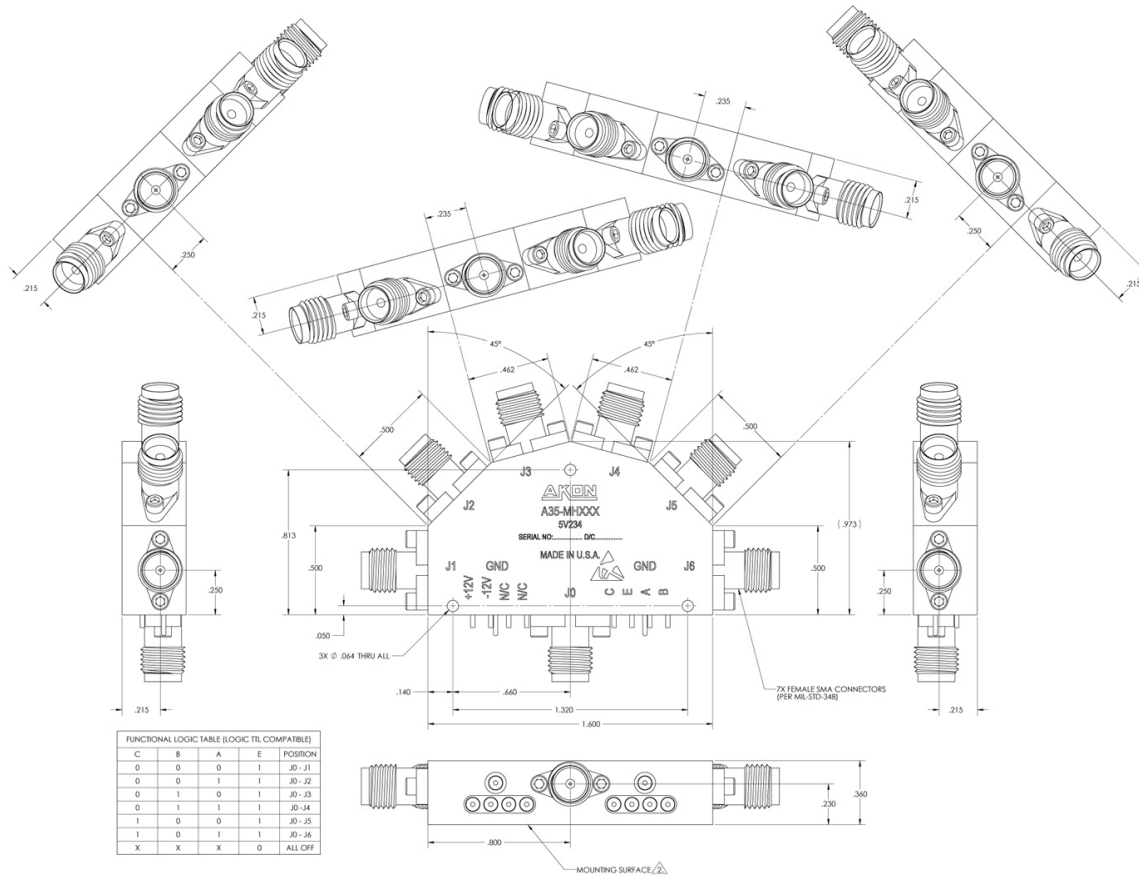


### SP5T OUTLINE DRAWING:





### SP6T OUTLINE DRAWING:



FUNCTIONAL LOGIC TABLE (LOGIC TTL COMPATIBLE)				
C	B	A	E	POSITION
0	0	0	1	J0 - J1
0	0	1	1	J0 - J2
0	1	0	1	J0 - J3
0	1	1	1	J0 - J4
1	0	0	1	J0 - J5
1	0	1	1	J0 - J6
X	X	X	0	ALL OFF