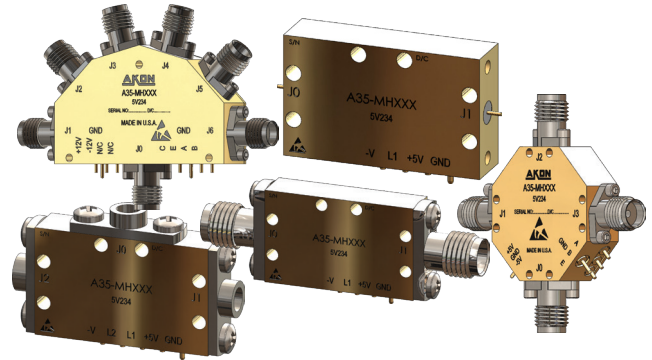


KEY PERFORMANCE FEATURES

- Low Insertion Loss
- High Isolation
- Wide Band Frequency Coverage
- Compact and Ruggedized Packaging
- Package Options: Drop-In, SMA/2.9mm & SMP

PRODUCT DESCRIPTION

AKON's product line of RF & Microwave Switches that operates over a frequency range of 0.5 - 40 GHz. These switches are available in standard configurations such as SPST through SP6T with single ended TTL control. Our SP2T switches have a typical Insertion Loss of 1.2 - 1.8 dB, Isolation of 65 dB, and switching speeds of 40 nsec. Package options include Drop-In, SMA/2.9mm & SMP, and offers reflective/absorptive configurations.



AKON products are designed to withstand harsh environments of Military, Space and Industrial applications. Our compact and ruggedized products are designed to handle harsh mechanical shock/vibrations, temperature cycling, altitude and temperature extremes.

Reliability is a key feature of AKON products and to ensure this we perform ESS testing on all of our products. AKON offers an off-the-shelf screening option called its "H" series, per Mil-STD-883 level B that is available on all of its RF & Microwave Components. **For custom electrical, mechanical, and screening options, please contact AKON Sales: sales@akoninc.com (or) 408-432-8039.**

SPECIFICATIONS:

Model Number	Frequency (GHz)	Insertion Loss (dB)	Isolation (dB)	VSWR	Switching Speed (nS)	Bias (VDC)	Control Input	Power Handling (dBm)	Pkg.	EAR99/ITAR
SPST										
A35-MH208	0.5 - 4	1.1	60	1.8:1	50	+5, -12	TTL	24	D, C, S	EAR99
A35-MH209	0.5 - 8	1.4	60	1.8:1	50	+5, -12	TTL	24	D, C, S	EAR99
A35-MH210	0.5 - 12	1.4	60	1.8:1	50	+5, -12	TTL	24	D, C, S	EAR99
A35-MH211	0.5 - 18	1.9	60	1.8:1	50	+5, -12	TTL	24	D, C, S	EAR99
A35-MH212	0.5 - 20	2.4	60	1.8:1	50	+5, -12	TTL	24	D, C, S	EAR99
SP2T										
A35-MH213	0.5 - 4	1.3	60	1.8:1	50	+5, -12	TTL	24	D, C, S	EAR99
A35-MH214	0.5 - 8	1.8	60	1.8:1	50	+5, -12	TTL	24	D, C, S	EAR99
A35-MH215	0.5 - 12	1.8	60	1.8:1	50	+5, -12	TTL	24	D, C, S	EAR99
A35-MH216	0.5 - 18	2.3	60	1.8:1	50	+5, -12	TTL	24	D, C, S	EAR99
A35-MH217	0.5 - 20	2.8	60	1.8:1	50	+5, -12	TTL	24	D, C, S	EAR99
A35-MH206*	1 - 18	4.3	65	2.0:1	50	+5, -12	TTL	20	D, C, S	EAR99
A35-MH139	2 - 18	3.0	60	2.0:1	50	+/- 5	TTL	24	D, C, S	EAR99
A35-MH207*	6 - 20	4.3	65	2.0:1	50	+5, -12	TTL	20	D, C, S	EAR99

AKON, Inc. and its affiliates reserve the right to make changes to the product(s) or information contained herein without notice.

All products are measured in 50-ohm system, over a temperature Range of -54° to +85° C.

*Absorptive Design; **Uses 2.9mm connectors

Note: Packaging Options: D = Drop-In, C = F-SMA, S = SMP (Model Number Example: A35-MH143D)

Note: All dimensions are specified in inches (mm)

SPECIFICATIONS (CON'T):

Model Number	Frequency (GHz)	Insertion Loss (dB)	Isolation (dB)	VSWR	Switching Speed (nS)	Bias (VDC)	Control Input	Power Handling (dBm)	Pkg.	EAR99/ITAR
A35-MH205**	18 - 40	4.5	65	2.0:1	75	+5, -12	TTL	20	D, C, S	EAR99
SP3T										
A35-MH132	2 - 18	2.5	60	2.0:1	50	+/- 5	TTL	24	C, S	EAR99
SP3T-SP2T										
A35-MH138	2 - 18	3	60	2.0:1	50	+/- 5	TTL	30	C, S	EAR99
SP4T										
A35-MH202*	1 - 18	4.3	65	2.0:1	50	+/-5	TTL	20	C	EAR99
A35-MH133	2 - 18	4.4	60	2.0:1	50	+/-5	TTL	24	C	EAR99
A35-MH203*	1 - 18	4.3	65	2.0:1	50	+/-5	TTL	20	C	EAR99
SP5T										
A35-MX195	2 - 18	3	70	2.0:1	50	+/- 5	TTL	24	C	EAR99
A35-MH137	2 - 18	4	60	2.0:1	50	+/-5	TTL	24	S	EAR99
SP6T										
A35-MH204*	1 - 18	6	65	2.0:1	75	+5, -12	TTL	20	C	EAR99
A35-MH134	2 - 18	6	55	2.0:1	50	+5, -12	TTL	24	C	EAR99

AKON, Inc. and its affiliates reserve the right to make changes to the product(s) or information contained herein without notice.

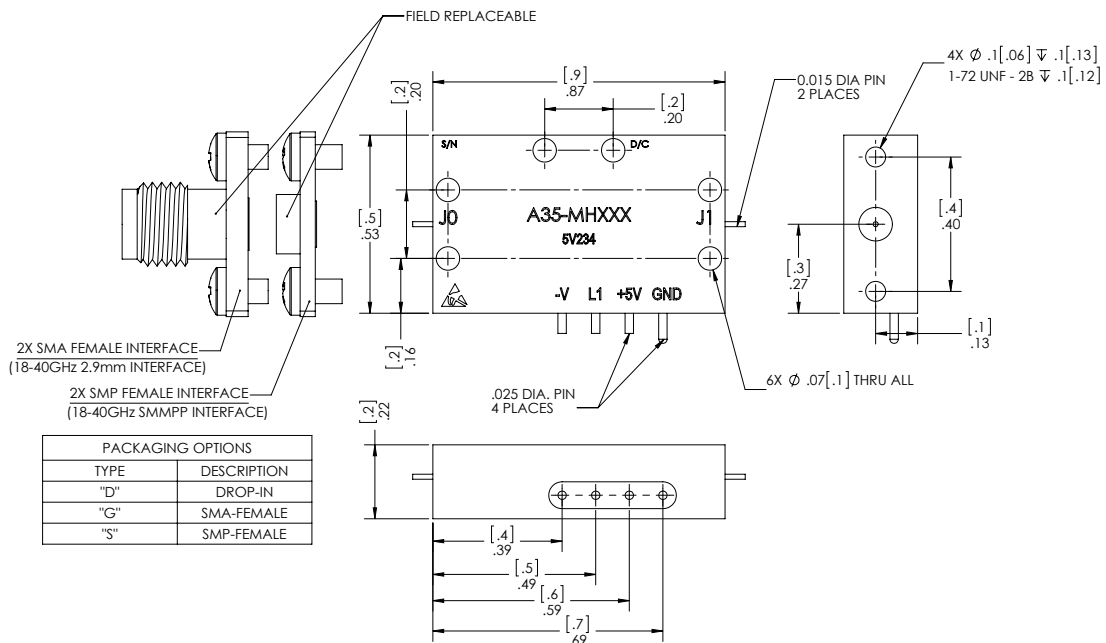
All products are measured in 50-ohm system, over a temperature Range of -54° to +85° C.

*Absorptive Design; **Uses 2.9mm connectors

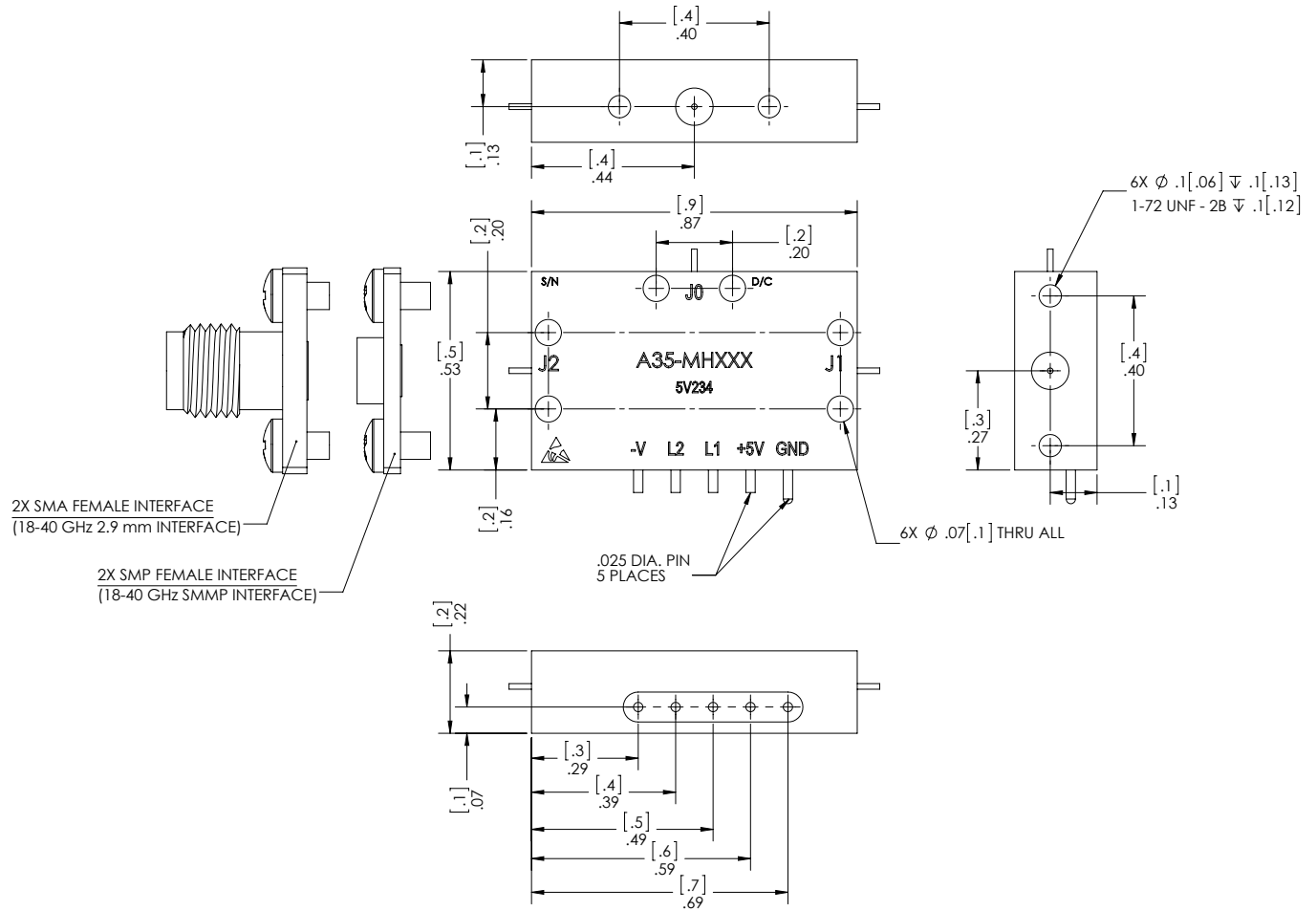
Note: Packaging Options: D = Drop-In, C = F-SMA, S = SMP (Model Number Example: A35-MH143D)

Note: All dimensions are specified in inches (mm)

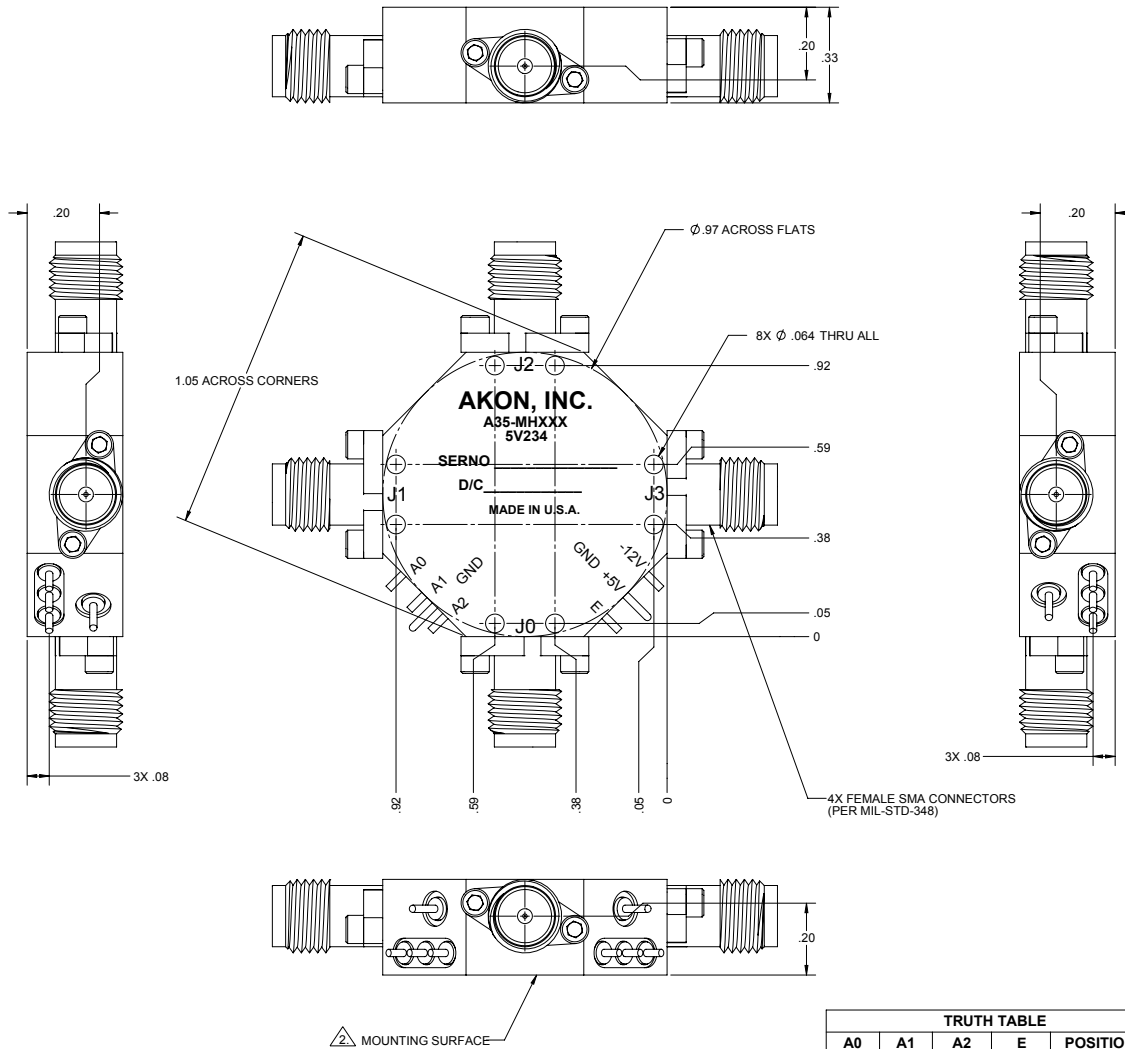
SPST OUTLINE DRAWING



SP2T OUTLINE DRAWING

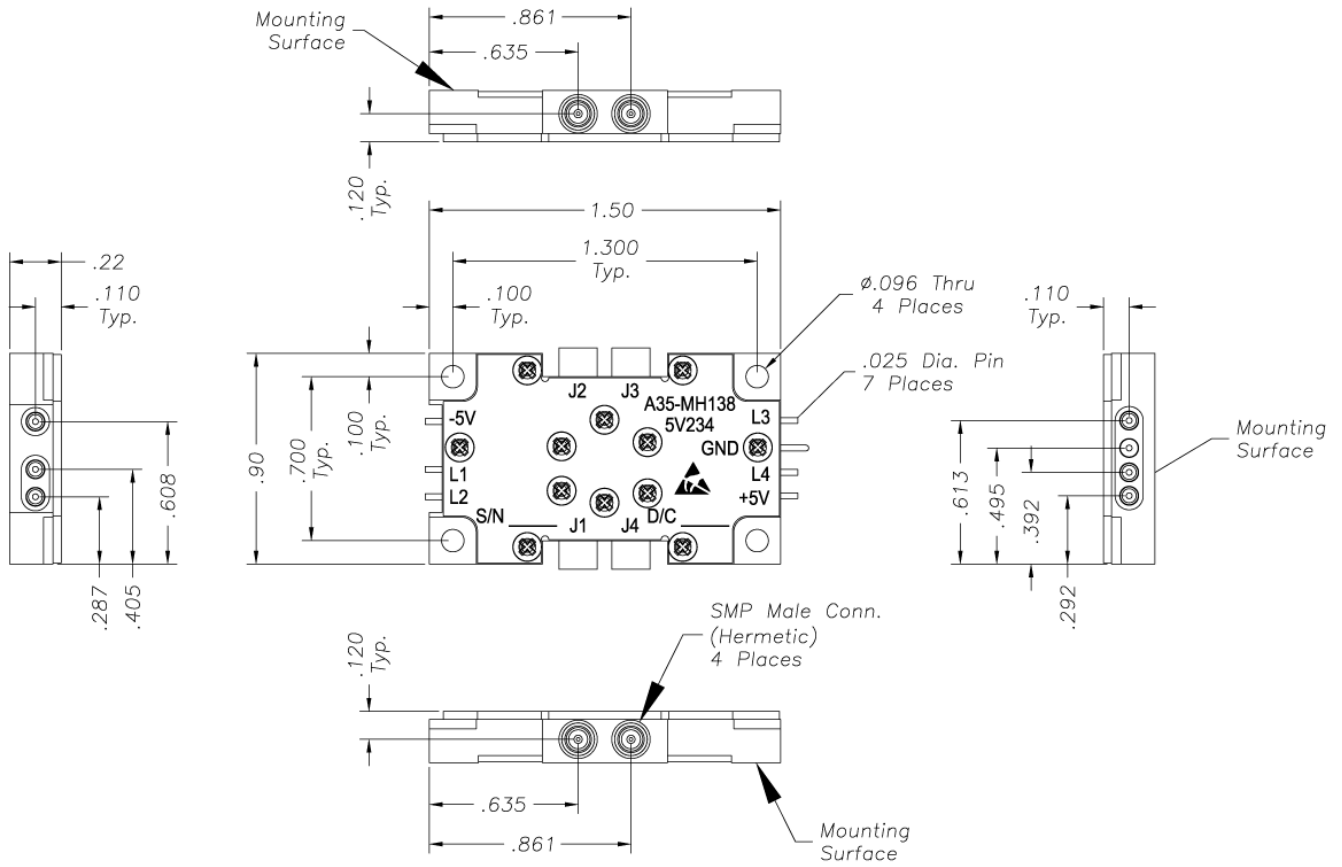


SP3T OUTLINE DRAWING

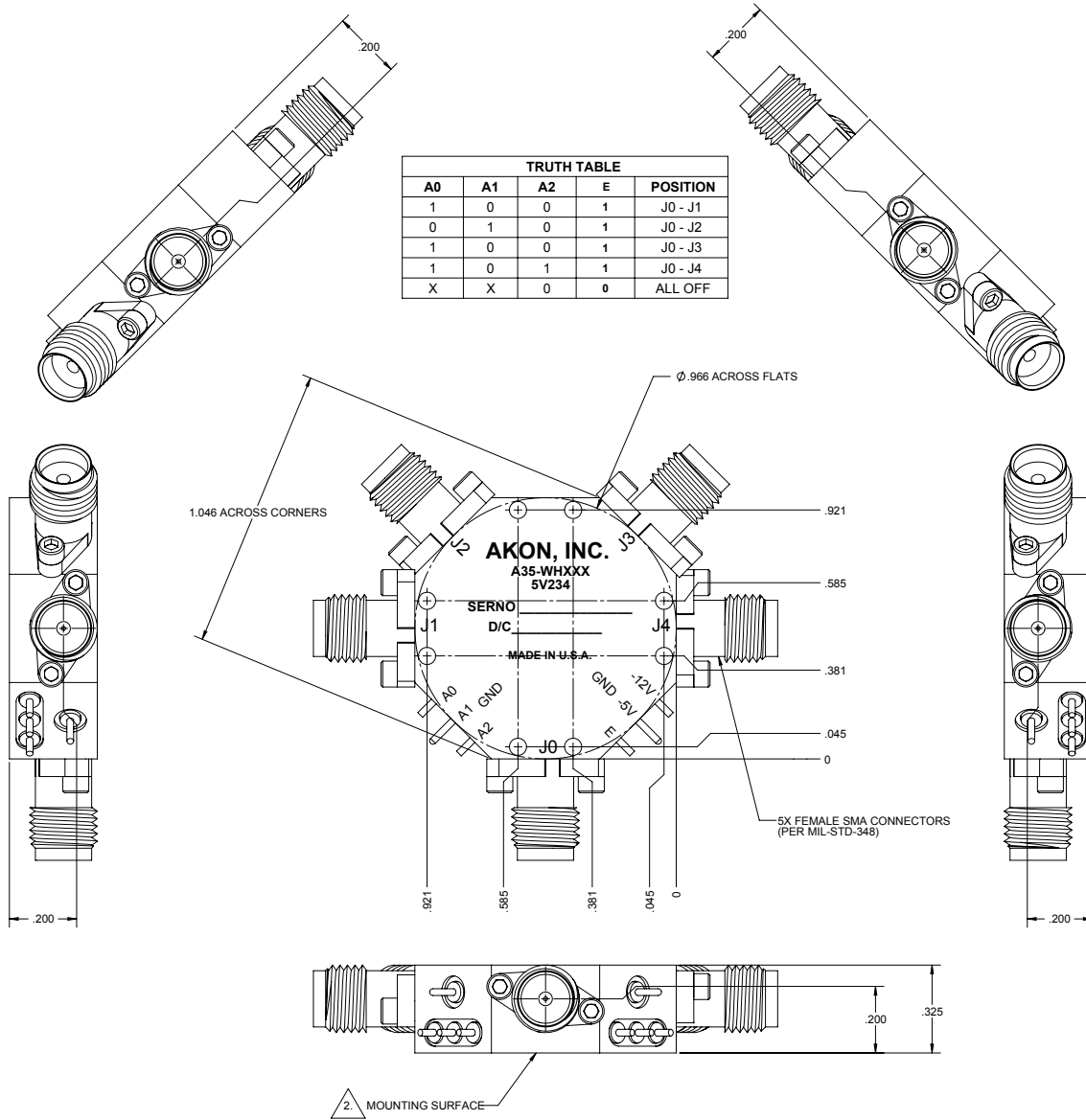


TRUTH TABLE				
A0	A1	A2	E	POSITION
1	0	0	1	J0 - J1
1	1	0	1	J0 - J2
1	0	1	1	J0 - J3
X	X	X	0	DISABLED

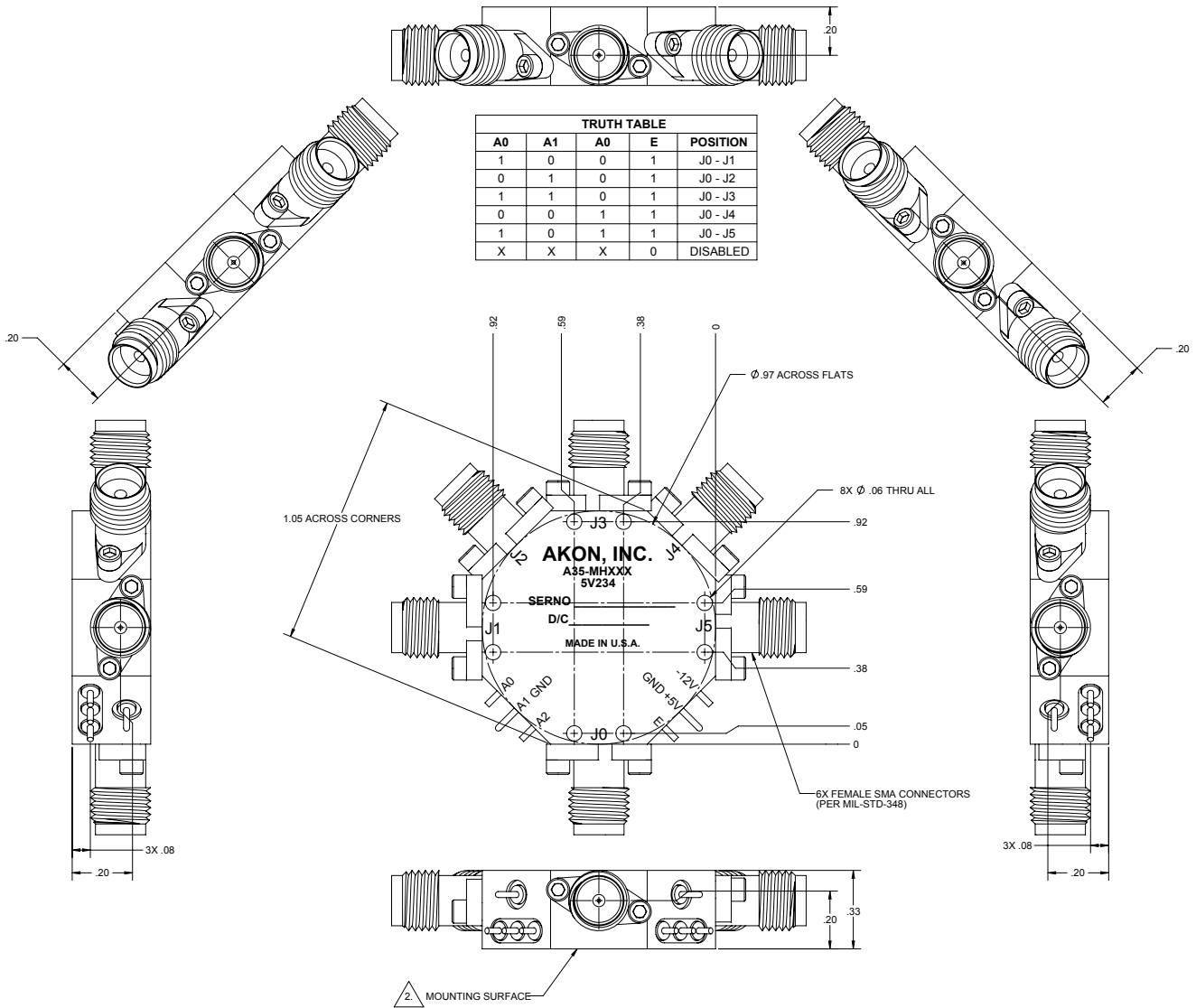
SP3T-SP2T OUTLINE DRAWING



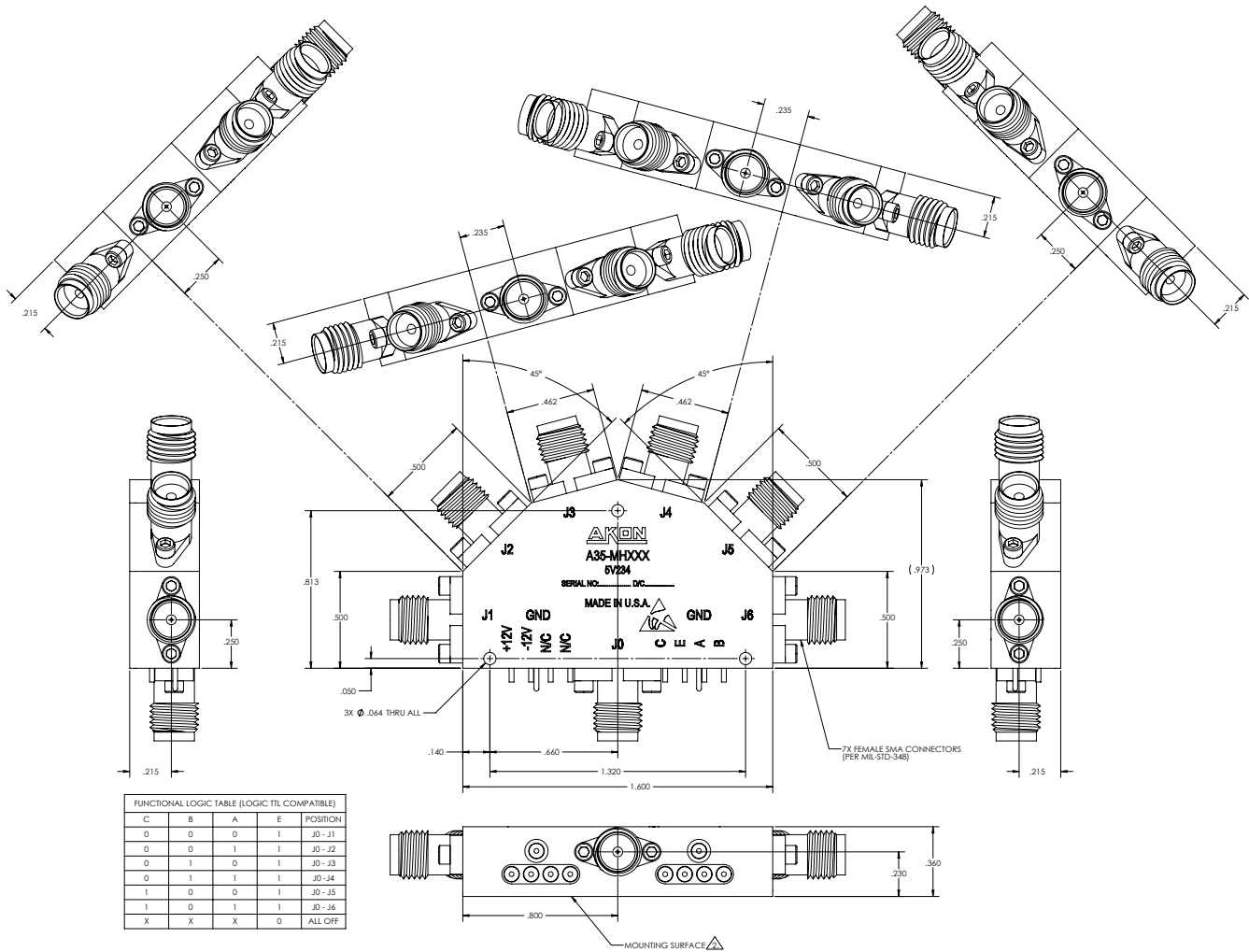
SP4T OUTLINE DRAWING



SP5T OUTLINE DRAWING



SP6T OUTLINE DRAWING



FUNCTIONAL LOGIC TABLE (LOGIC TTL COMPATIBLE)				
C	B	A	E	POSITION
0	0	0	1	J0 - J1
0	0	1	1	J0 - J2
0	1	0	1	J0 - J3
0	1	1	1	J0 - J4
1	0	0	1	J0 - J5
1	0	1	1	J0 - J6
X	X	X	0	ALL OFF